

Bellows

INFICON ISO-K quality fittings are manufactured according to ISO 1609, DIN 28404 and Pneurop 6606. Our quality large diameter fittings are the standard vacuum components for all vacuum and high vacuum lines. The high quality INFICON fittings are designed and tested for leak rates less than 1×10^{-9} mbar l/s.



BENEFITS

- Competitively priced
- World wide logistics
- Design and measures follow strictly international respected standards
- Surface finish, welds, material specifications and cleanliness meet or exceed high vacuum specifications
- 2011/65/EU RoHS compliant

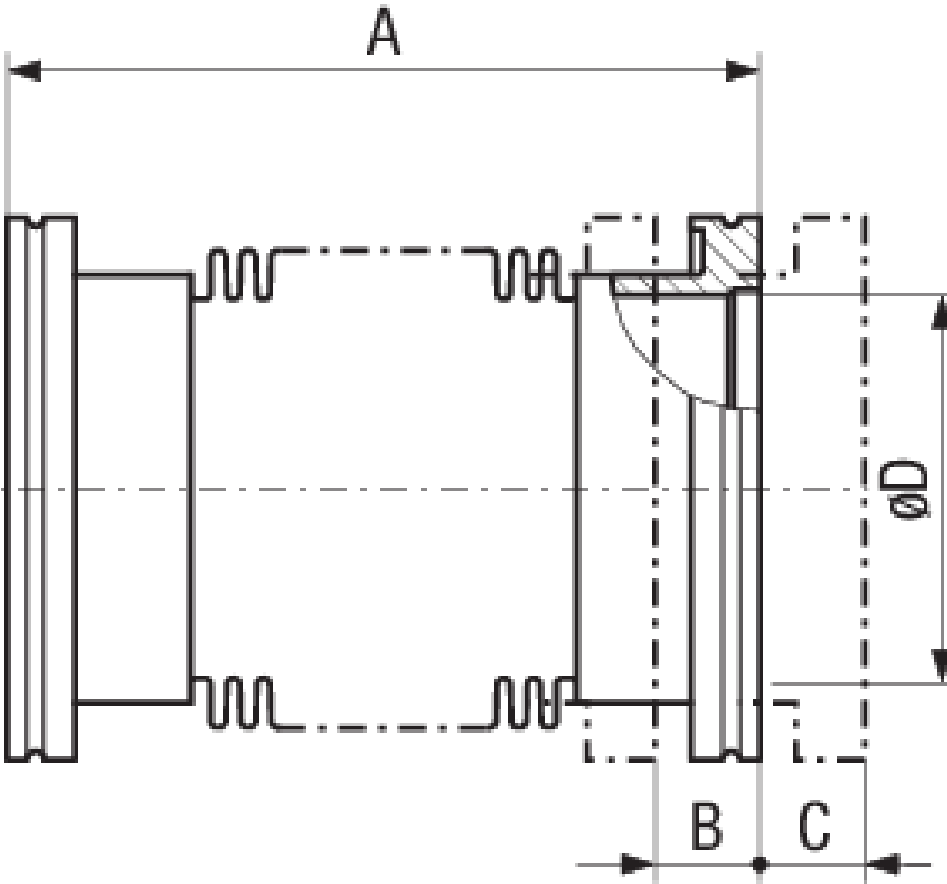
ORDER INFORMATION

Type	DN 63 ISO-K	DN 100 ISO-K	DN 160 ISO-K	DN 200 ISO-K	DN 250 ISO-K	DN 320 ISO-K
Bellows, inox, DN 100 ISO-K		212-202				
Bellows, inox, DN 160 ISO-K			212-203			
Bellows, inox, DN 200 ISO-K				212-204		
Bellows, inox, DN 250 ISO-K					212-205	
Bellows, inox, DN 320 ISO-K						212-206
Bellows, inox, DN 63 ISO-K	212-201					

SPECIFICATIONS

Type	DN 63 ISO-K	DN 100 ISO-K	DN 160 ISO-K	DN 200 ISO-K	DN 250 ISO-K	DN 320 ISO-K
Dimension A	132	132	150	150	200	250
Dimension B	20	28	22	20	30	50
Dimension C	20	28	22	20	30	50
Dimension D	66	95	153	213	261	313
Dimension E	30°	30°	14°	12°	13°	7.5°
Flanges:	Stainless steel 304/-	Stainless steel 304/-	Stainless steel 304/-	Stainless steel 304/-	Stainless steel 304/-	Stainless steel 304/-
Bellows:	Stainless steel 316Ti/-	Stainless steel 316Ti/-	Stainless steel 316Ti/-	Stainless steel 316Ti/-	Stainless steel 316Ti/-	Stainless steel 316Ti/-
Internal pressure:	Max. 1.5 bar	Max. 1.5 bar	Max 1.5 bar	Max. 1.5 bar	Max. 1.5 bar	Max. 1.5 bar
A =	unstressed length	unstressed length	unstressed length	unstressed length	unstressed length	unstressed length
E =	max. deviation from axis	max. deviation from axis	max. deviation from axis	max. deviation from axis	max. deviation from axis	max. deviation from axis

DIMENSIONS



www.inficon.com reachus@inficon.com

Due to our continuing program of product improvements, specifications are subject to change without notice.
RateWatcher is a trademark of INFICON. All other trademarks are the property of their respective owners.

(2018-08) © 2018 INFICON